



合肥旭丰和机电科技有限公司

Hefei XFH Electromechanical Technology Co., Ltd

Water cooled handheld laser welding machine

Welding machine We only make the best

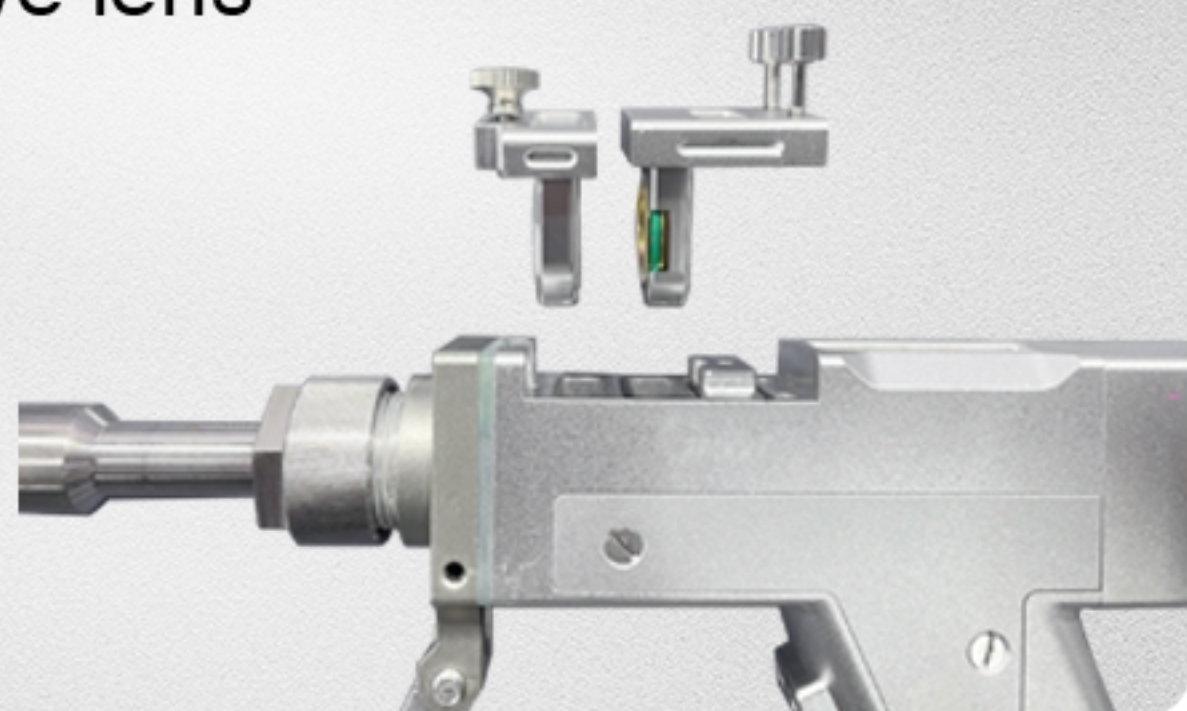
www.xfh laser.com



PRODUCT FEATURES ///

POINT 1

Classic protective lens design



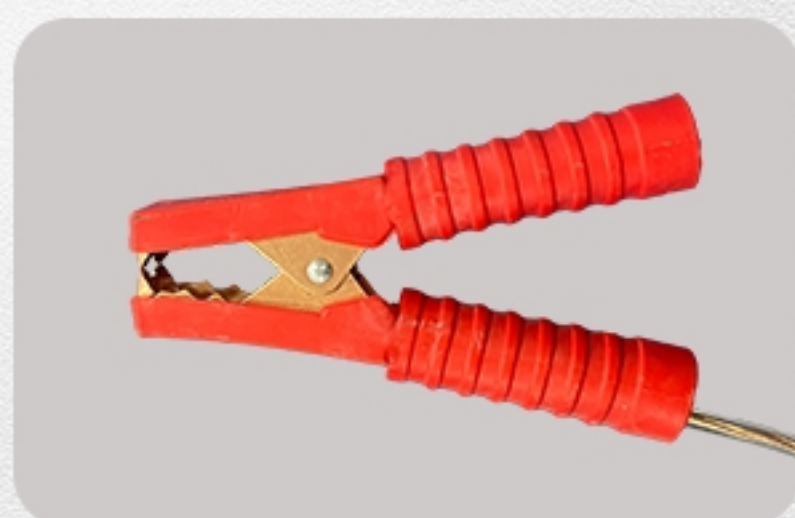
POINT 2

Drawer type lens design, easy to replace, simple maintenance



POINT 3

The equipment is equipped with an emergency stop button and a safety clip, which makes it safe to use



POINT 4

Top of screen design
Easy to operate



POINT 5

10 meters welding line
Wide area of use



POINT 6

Complete specification of accessories



COMPARISON OF ADVANTAGES AND DISADVANTAGES ///

Comparison with conventional TIG/MIG welding methods



VS



Advantages of Water cooled handheld laser welding machine

Advantage **1**

No welding technology
required

Advantage **5**

Small heat distortion

Advantage **2**

Fast welding speed

Advantage **6**

Low welding fume

Advantage **3**

Beautiful weld seam

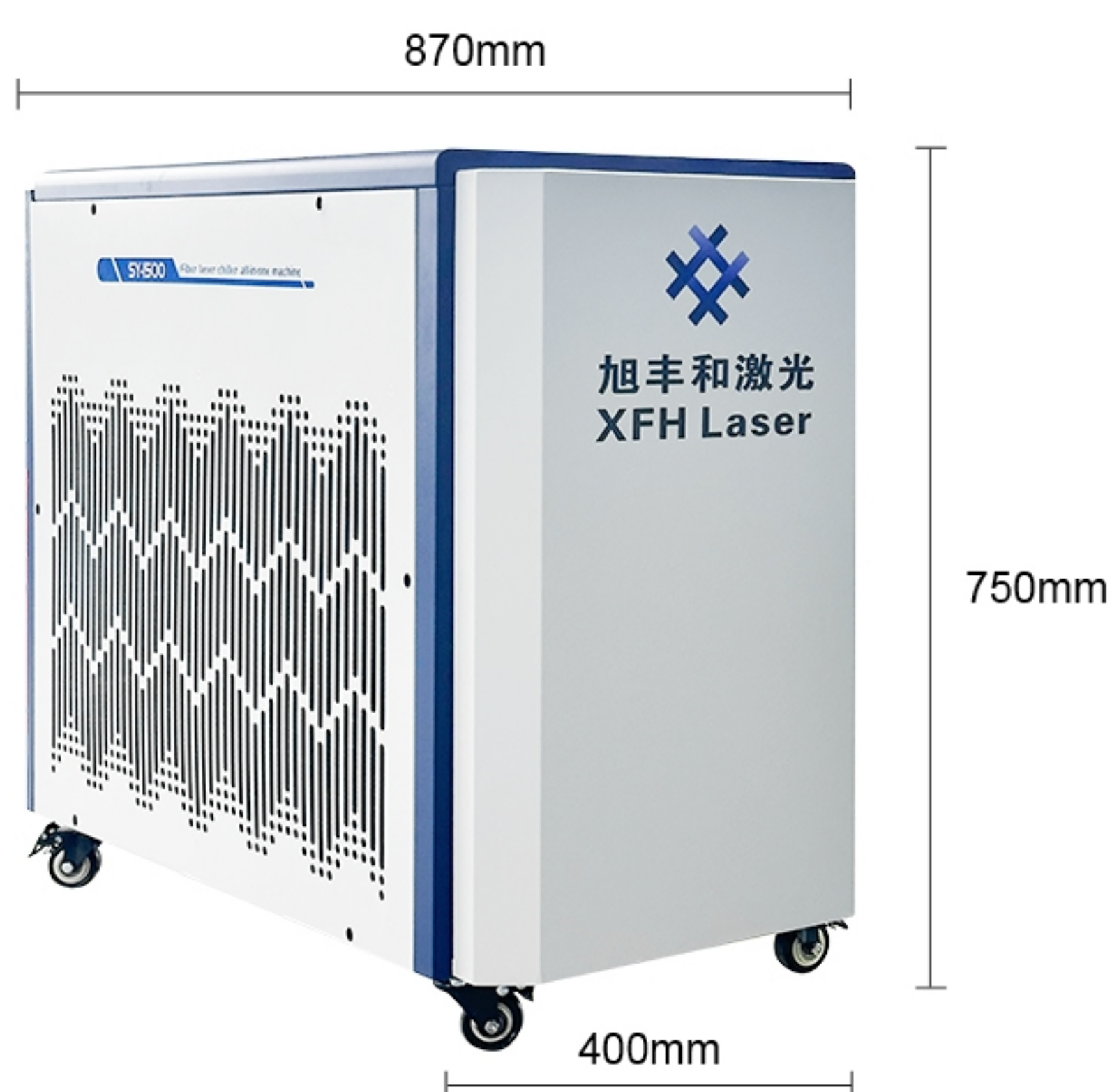
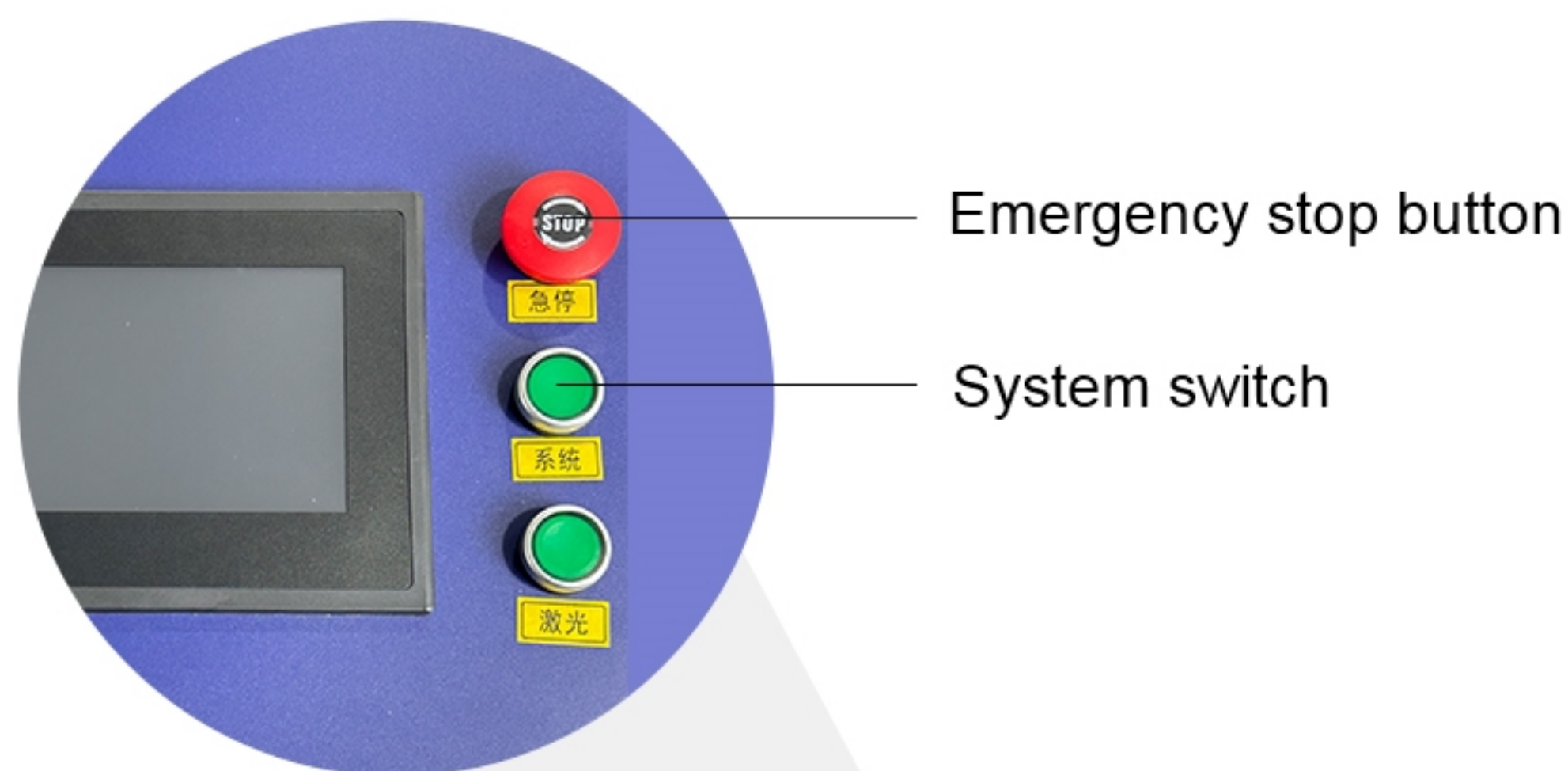
Advantage **7**

No glare during welding

Advantage **4**

No grinding

PRODUCT INTRODUCE ///

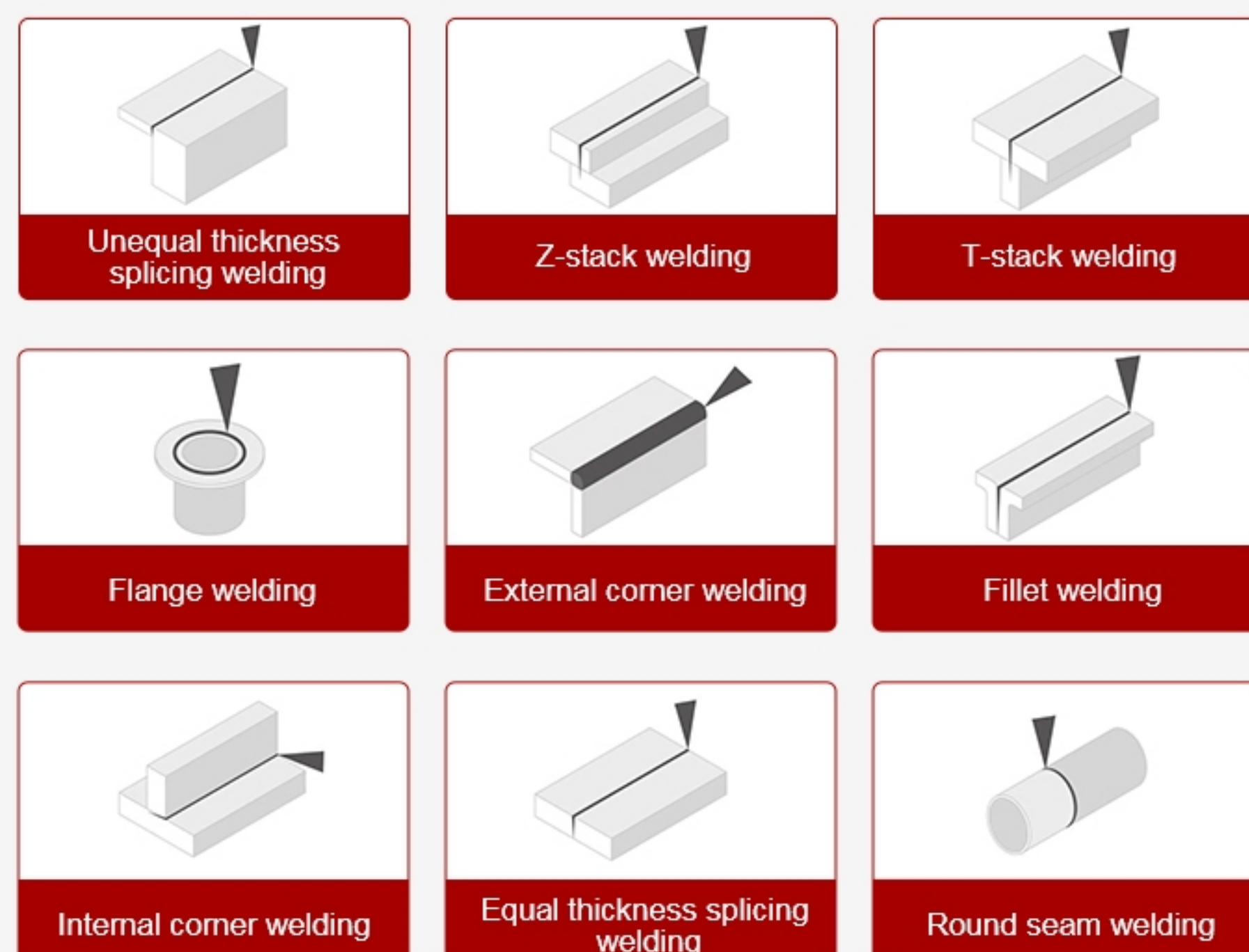


3000W size See equipment parameters for details



Welding at any angle

Welding head can weld workpieces at any angle, suitable for various complex welds and various equipment



PACKING LIST ///

01 Laser welding machine (1 unit)
Includes 10 meters of welding wire

02 Wire feeder (1 set)
Includes wire feed tube, wire feed wheel accessories

03 Safety goggles (1 pair)

04 Welding nozzle 5pcs

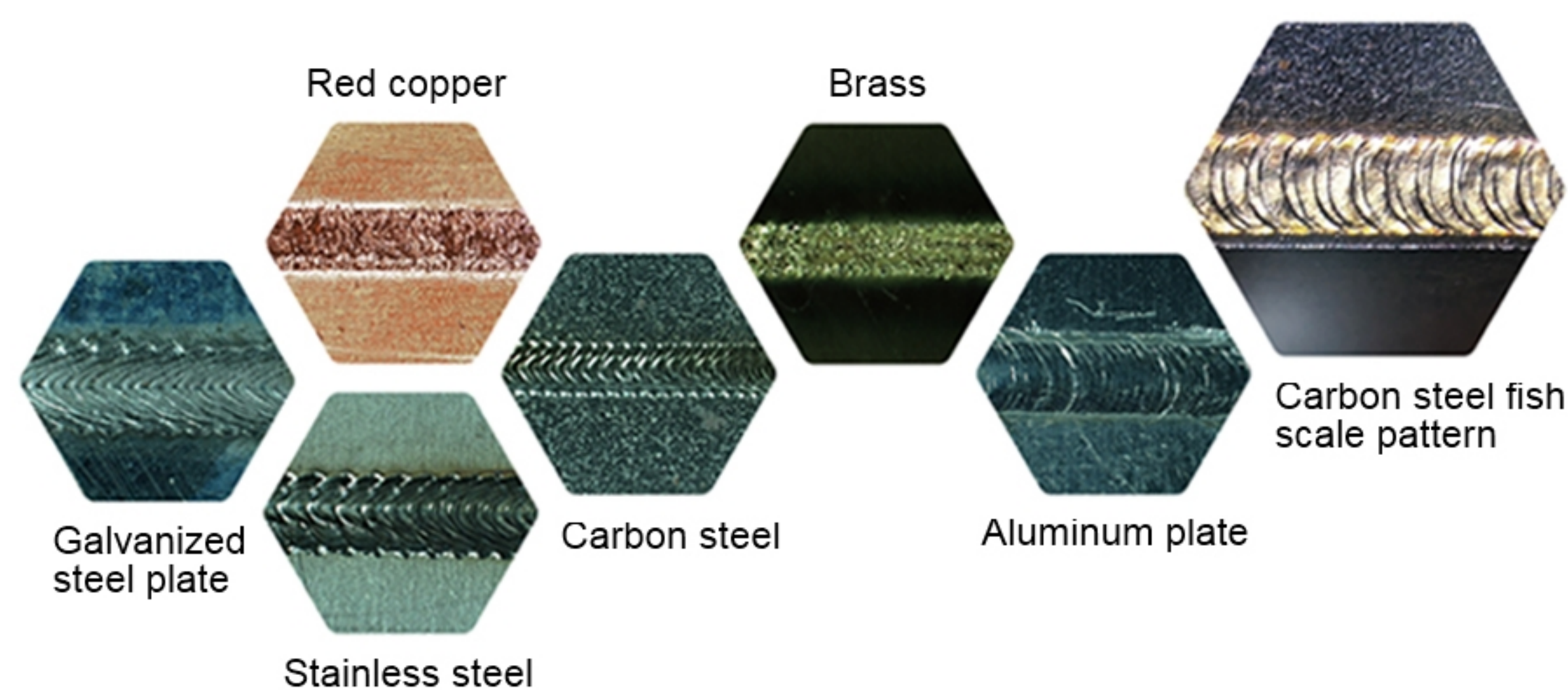
05 Protective lens 5pcs (disposables)
18*2

06 Nozzle assembly 1 set
Includes 0.8/1.0/1.2/1.6mm wire nozzle and wire feeder

07 Protective gas connection fittings 1pcs

PRODUCT INTRODUCE ///

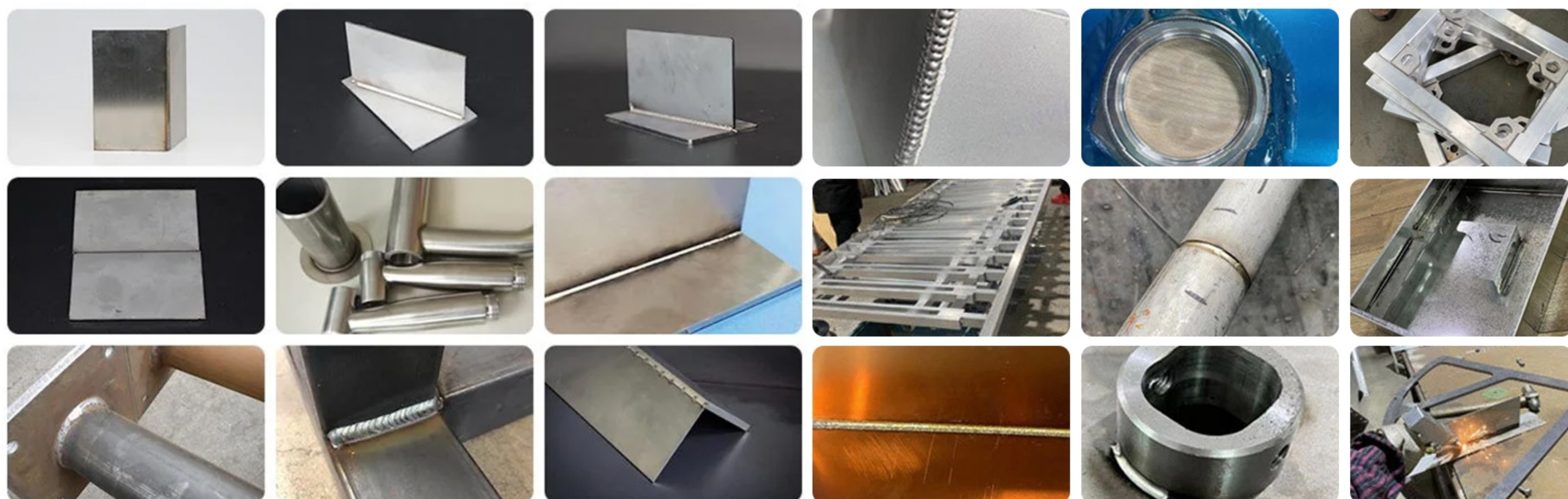
● Not only ease of use and efficiency, but also welding art



Through the intelligent operating system, users can quickly select welding parameters based on different materials and thicknesses, and beginners can also weld high-quality and consistent welds.



● Application cases



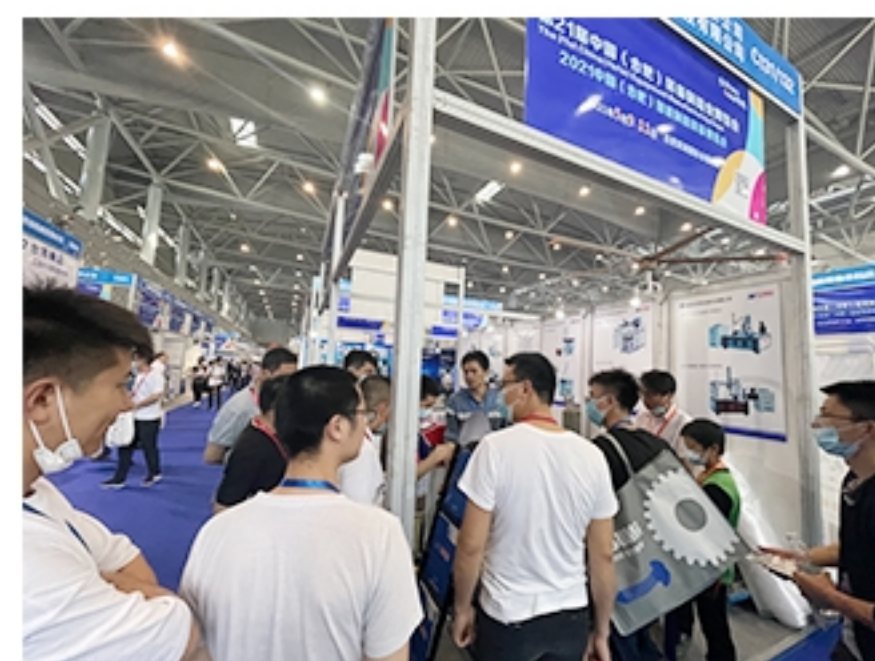
PRODUCT PARAMETER

///

Specification and model	1000w	1500w	2000w	3000w
Size (mm)	870*400*705mm	870*400*705mm	870*400*705mm	1125*520*880mm
Weight (kg)	75kg	80kg	85kg	130kg
Total power (kw)	5kw	6.5kw	9kw	13kw
Input voltage (v)	220V			380v
Cooling method	Water cooled	Water cooled	Water cooled	Water cooled
Operation temperature	0--45℃			
Wavelength (nm)	1070	1070	1070	1070
Welding handle wire length (m)	10	10	10	10
Welding speed m/min	0-2m	0-2m	0-2m	0-2m
welding thickness (mm)	0.4-3	0.4-4	0.4-6	0.4-8
Scan width (mm)	0-8mm			
Weldable materials	Carbon steel, stainless steel, aluminum, galvanized materials and other metal material			
Positioning indication	Red light	Red light	Red light	Red light
Capable of functionality	Welding, cutting, cleaning			
Adapted welding wire diameter (mm)	0.8/1.0/1.2/1.6/2.0			
Automatic wire feeding	Standard configuration	Standard configuration	Standard configuration	Standard configuration
Double wire welding	No	No	Yes	Yes
Welding Wire Specifications	Solid coiled wire, same as gas-shielded wire			
Welding Wire Material	Same as welded base material			
Protective gas	Nitrogen, argon, carbon dioxide			
Protective gas flow rate L/min	10-15 liters per minute			

COMPANY INTRODUCTION

Hefei XFH Mechatronics Technology Co., Ltd. has accumulated years of experience in manufacturing laser welding equipment, gathered elite technical talents in the industry, and carried out comprehensive innovation and iteration of handheld laser welding equipment to promote welding technology upgrading. We are a national high-tech enterprise that integrates research and development with production. Providing customers with high-quality handheld laser welding equipment and a brand new welding experience.



CONTACT INFORMATION